



**SPECIALISTS IN DIRECTIONAL, HORIZONTAL,
AND MULTI LATERAL SERVICES**

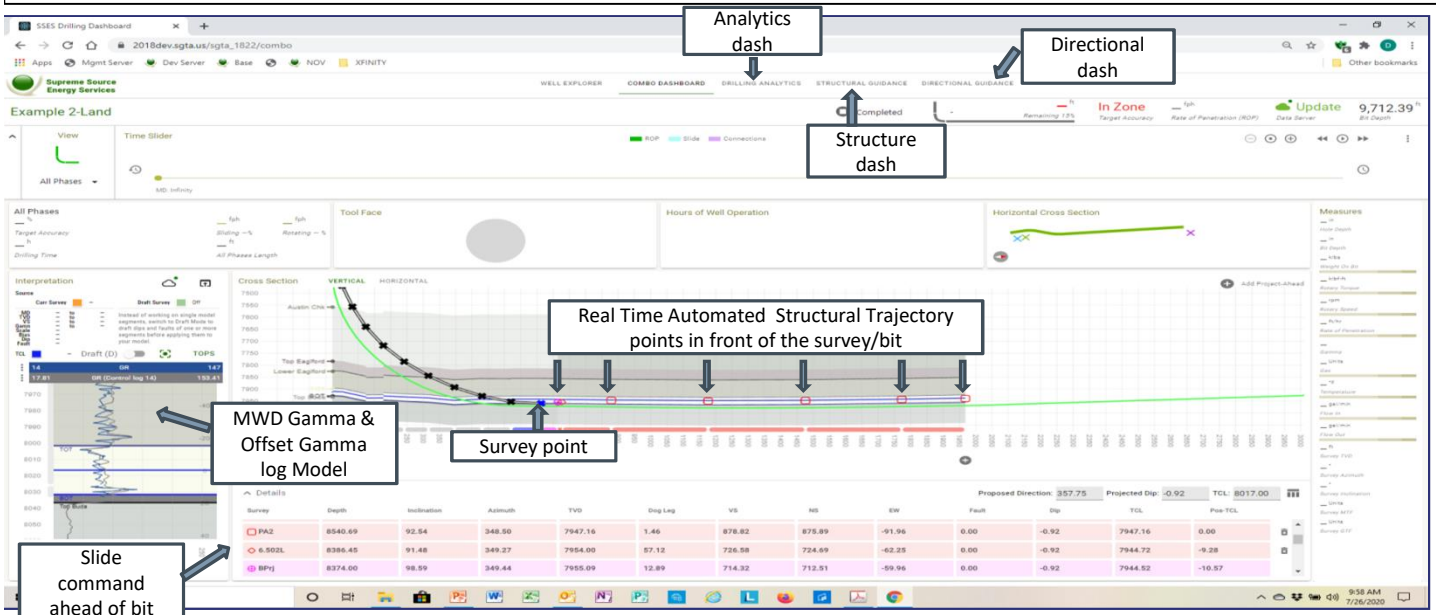


16623 Aldine Westfield rd., Houston Tx. 77032 Off 281-395-5202 Sales 281-414-8100 Ship 888-841-3348

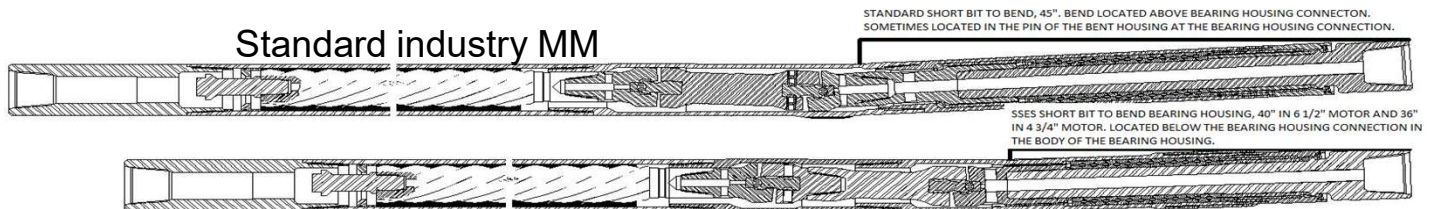
SSES Directional and Horizontal Drilling Service

SSES DD/HD services has over 37 years of experience and expertise. Conventional, unconventional, under balanced, Re Entry, Short radius and multi lateral all under one roof. SSES is the only company who's service package includes Real time Structural Targeting (SGTA) with patented software for precision placement & increased zone exposure, Patented Dominator MM, Reliable TolTeq MWD/gamma pulsar, Tool Tracker memory, real-time shock & vib., wireless surface system, & real time inc. and azm.

Real Time Structural Guidance Management with Patented SGTA software



Patented DOMINATOR MM with exclusive bent bearing Housing



Patented SSES bent bearing MM

Tolteq MWD pulsar with gamma, tool tracker, instant inc/azm, RT shock/Vib.





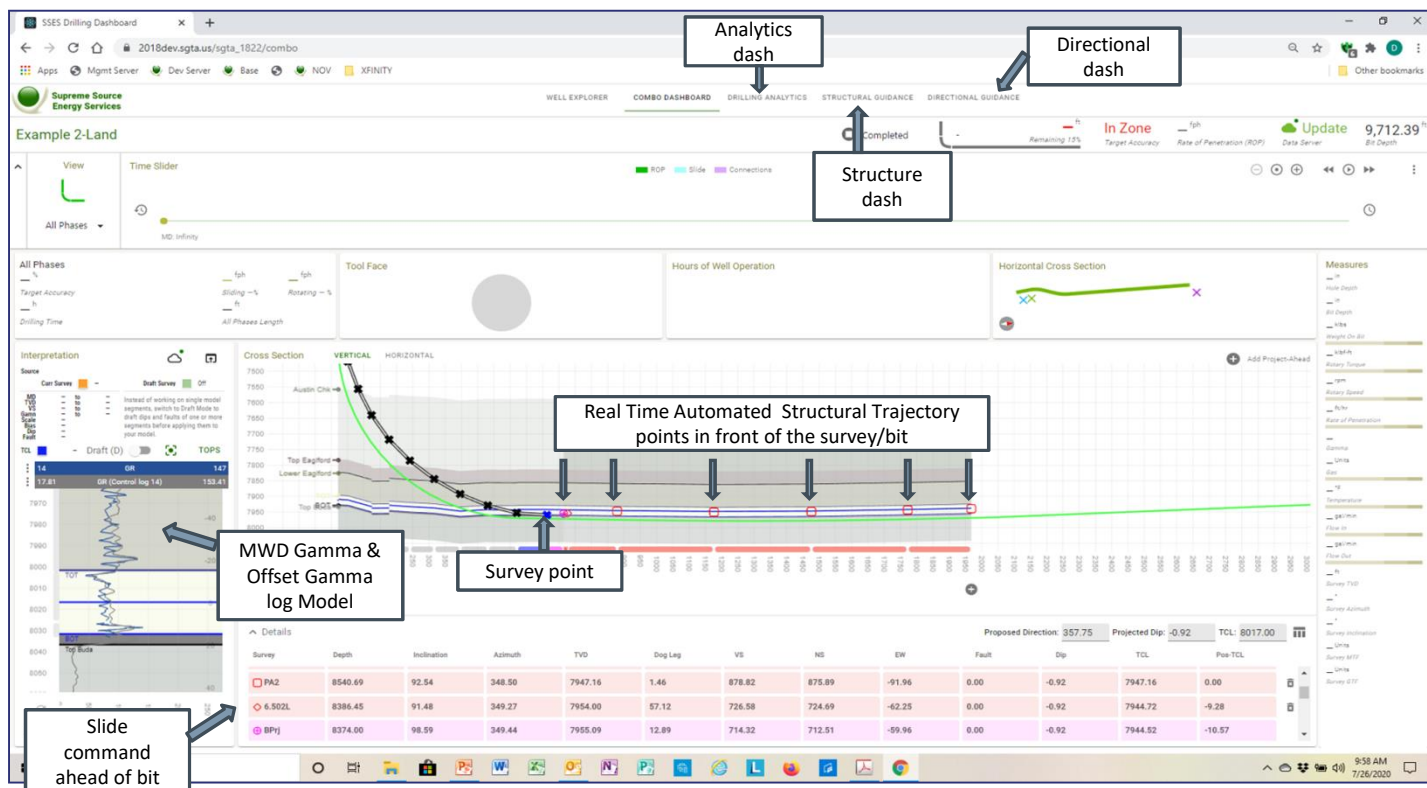
SPECIALISTS IN DIRECTIONAL, HORIZONTAL,
AND MULTI LATERAL SERVICES



16623 Aldine Westfield rd., Houston Tx. 77032 Off 281-395-5202 Sales 281-414-8100 Ship 888-841-3348

SSes Structural Guidance Management (SGTA)

SSes Structural Guidance Management (SGTA) is a product with over 37 years of Directional, Horizontal and geo steering experience and expertise. SSes is the only DD/HD company that offers this patented product. As a stand alone or with our DD/HD package services, Operators can remotely manage, view, collaborate and communicate with their DD/HD services at the site. No more mystery's of where we are and how we got their. Cloud based and interactive with other services cloud data, the process and system, delivers precision Targeting, by using gamma data, drilling data and regional structure data to identify immediate formation changes that affect well bore placement. Then it automatically calculates and produces projected well bore placement within the ever changing structure. Whether used periodically, at every survey or while drilling, the operator will know what their DD/HD services are doing while the structure changes. This is accomplished all in one software package.



SSes Structural Guidance Management with Automated Structural Guidance Tracking Analysis (SGTA) software

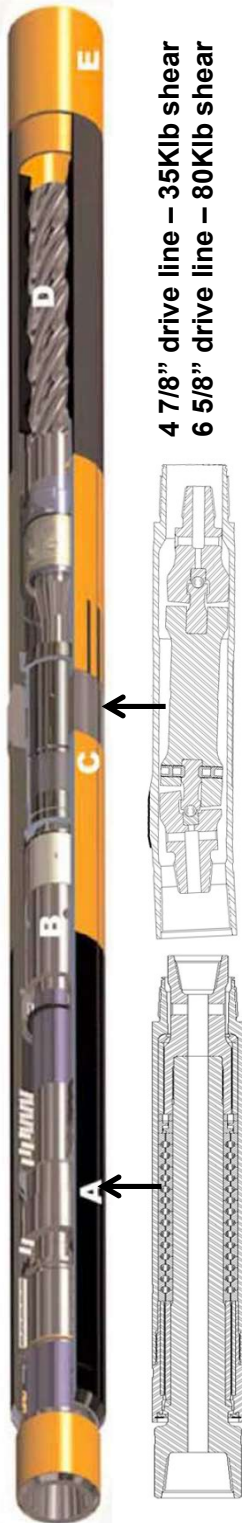


**SPECIALISTS IN DIRECTIONAL, HORIZONTAL,
AND MULTI LATERAL SERVICES**



16623 Aldine Westfield rd., Houston Tx. 77032 Off 281-395-5202 Sales 281-414-8100 Ship 888-841-3348

SSES Directional and Horizontal Drilling Service



4 7/8" drive line – 35Klb shear
6 5/8" drive line – 80Klb shear

Dominator series mud motor is a product with over 37 years of experience and expertise. With the over-sized mandrels, bearings and couplings, Performance Power sections and carbide-coated rotors, the Dominator is up to any challenge that the client may have.

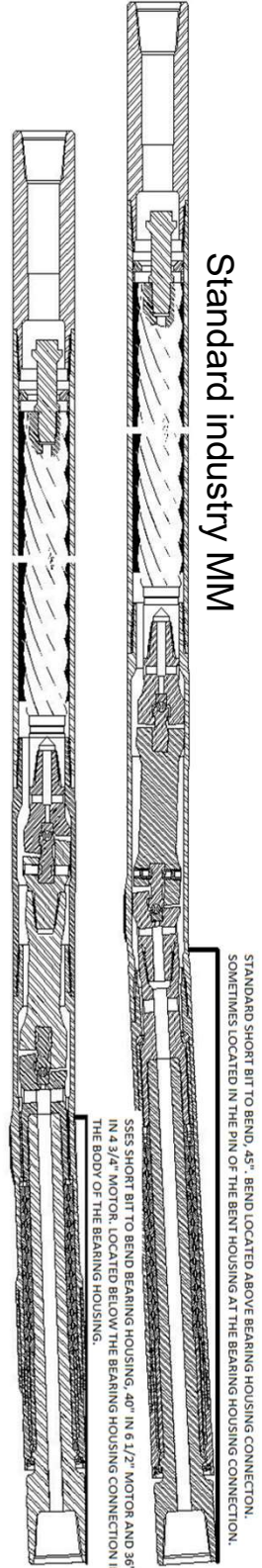
4 3/4"-5"-6 5/8"-7" OD fixed Patented bent bearing housing

Dominator Bent Bearing motor is a proven one-run motor for vertical, curve and lateral with one bit. Reduces 45% of the radial torsion stresses off of the bearing to transmission housing conn., mitigating cracks when using higher rotary speeds.

SIZE	CONFIG	REV/ GAL	GPM	STALL TQ
4 3/4"-5"	6/7-8.8	.79	150-350	12,060
4 3/4"-5"	5/6-8.3	1.0	100-275	7,840
6 1/2"-7"	4/5-7.0	.50	300-600	13,500
6 1/2"-7"	7/8-5.7	.23	300-600	24,000
6 1/2"-7"	7/8-6.0	.27	300-600	20,120
6 1/2"-7"	7/8-6.4	.29	300-600	24,000

ADDITIONAL POWER CONFIG. AVAILABLE ON INDIVIDUAL REQUEST

4 7/8" mandrel - 25Klb shear
6 5/8" mandrel – 60Klb shear



Standard industry MM

Patented SSES bent bearing MM

STANDARD SHORT BIT TO BEND, 45°, BEND LOCATED ABOVE BEARING HOUSING CONNECTION, SOMETIMES LOCATED IN THE PIN OF THE BENT HOUSING AT THE BEARING HOUSING CONNECTION.

SSS SHORT BIT TO BEND BEARING HOUSING, 40° IN 6 1/2" MOTOR AND 36° IN 4 3/4" MOTOR, LOCATED BELOW THE BEARING HOUSING CONNECTION IN THE BODY OF THE BEARING HOUSING.



**SPECIALISTS IN DIRECTIONAL, HORIZONTAL,
AND MULTI LATERAL SERVICES**



16623 Aldine Westfield rd., Houston Tx. 77032

Off 281-395-5202 Sales 281-414-8100 Ship 888-841-3348

SSES Toteq MWD/Gamma, Tool Tracker, instant inc/azm, RT shock/Vib.

SSS MWD/Gamma systems are manufactured and serviced by Frontier MWD with reliable Tolteq components and Frontier Technology. Made to last!!

TOLTEQ INTELLIGENT DIRECTIONAL MODULE (IDM) ADVANCED FEATURES

Operational time and environment history recorded in internal memory
On-board rotation detection
Shock, vibration & RPM pulsed to surface in real-time
Addition internal logging
Internal current usage logged to memory
Smart power management-efficient battery switching & logging of voltage & current
Fluxgate magnetometers
Quartz-flexure accelerometer
Legacy compatible
Enhanced circuit protection
Calibration coefficients included directly into module memory
Quality wiring inside with strain relief connectors and high temperature mesh covering for wires
Shorter, more rugged design



WIRELESS TOLTEQ SURFACE SYSTEMS ADVANCED FEATURES

Automated filtering and decoding
Wireless link from rig floor to shack
Automated logging
Well archiving
User friendly WITS interface
Complete Surface System, no additional hardware or software needed
Water-tight, durable Pelican case
Rugged marine connections





*SPECIALISTS IN DIRECTIONAL, HORIZONTAL,
AND MULTI LATERAL SERVICES*



16623 Aldine Westfield rd., Houston Tx. 77032

Off 281-395-5202 Sales 281-414-8100 Ship 888-841-3348

SSES Toteq MWD/Gamma, Tool Tracker, instant inc/azm, RT shock/Vib.

INTELLEGENT PULSAR GAMMA MODULE (iPGM) ADVANCED FEATURES

Gets Gamma 5.5 feet closer to the bit

Less time to assemble

More logging features

Enhanced circuit protection features

Add or remove Gamma as needed

No capacitor bank

Eliminate noise in Downhole Electrical Tool System

Incredible reliability, even in the toughest LCM environments

Interfaces with Legacy MWD system

Internal current consumption logged to memory

Quality Toteq wiring inside with strain relief connectors and high temp mesh covering for wires

Simplified Single Coil Design



MECHANICAL AND ENVIRONMENTAL SPECIFICATIONS

	Miniumum	Maximum	Units
Operating Temperature	0	175	°C
	32	347	°F
Survival Temperature	-40	185	°C
	-40	365	°F
Vibration, Random	20	gRMS, 15-500 Hz	
Shock	1000	g, 0.5 mSec, half-sine	

MWD'S ADVANCED FEATURES

Operational time and environment history recorded in internal memory, On-board rotation detection, Shock, vibration & RPM pulsed to surface in real-time, Addition internal logging, Internal current usage logged to memory, Smart power management-efficient battery switching and logging of voltage and current Fluxgate magnetometers, Quartz-flexure accelerometer, Legacy compatible, Enhanced circuit protection, Calibration coefficients included directly into module memory, Quality wiring inside with strain relief connectors and high temper ature mesh covering for wires, Shorter, more rugged design